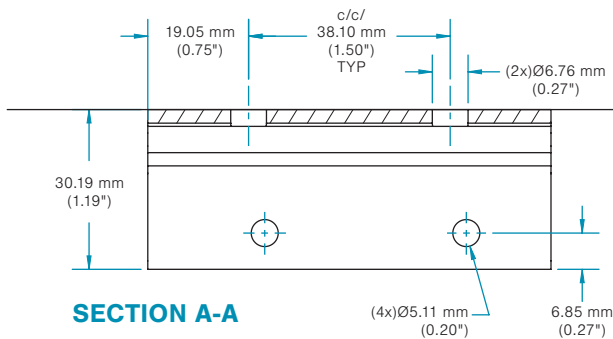
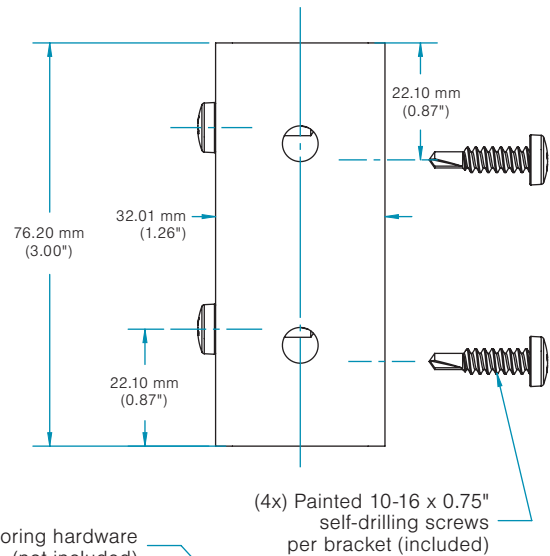
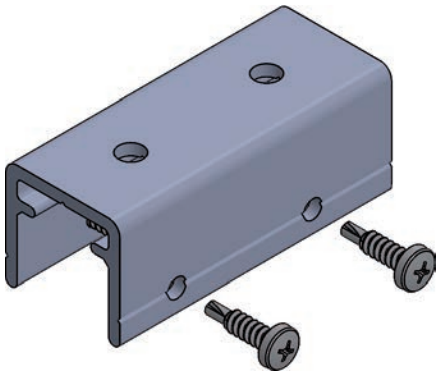


TECHNICAL DATA SHEET – INSTALLATION

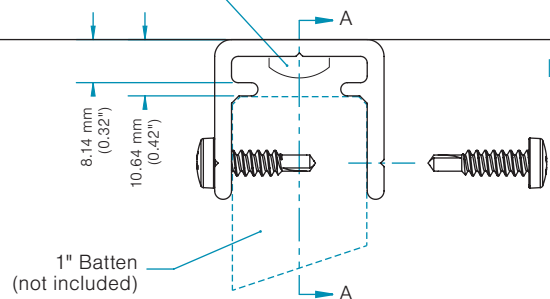
Aluminum batten accessories  
MAA Serie

# CC Bracket – 1 in Batten



Anchoring hardware  
(not included)

**ANCHORING  
SIDE**



## General Specifications

**MODEL**

CC Bracket - 1 in Batten

**MATERIAL**

6063-T6 aluminum

**FINISH**

RAL 7022 Matte

**WEIGHT**

0.11 lb | 0.049 kg

**RECOMMENDATION**

Recommended Span distance mounting for anchor screws (by others) and/or Maibec aluminum Brackets is 8'-0" (2438 mm) c/c\*.

\* Calculated for 1" (25 mm), 1.5" (38 mm) and 2" (50 mm) battens thickness from 2" (50 mm) to 8" (203 mm) width. For other dimensions, please contact customer services.

**NOTE**

The first screw/bracket must be installed a maximum of 12" (305 mm) from each batten end.

**IMPORTANT**

Always check local building regulations before installing Maibec aluminum battens.